



## SPOKANE INTERNATIONAL AIRPORT MONTHLY TRAFFIC REPORT August 2014

	August				YEAR TO DATE			
	2014	2013	Increase (Decrease)	Percent Difference	2014	2013	Increase (Decrease)	Percent Difference
<b>MAJOR AIRLINES:</b>								
Passengers								
Enplaned	113,562	103,424	10,138	9.80%	699,050	677,322	21,728	3.21%
Deplaned	110,387	101,928	8,459	8.30%	704,621	682,562	22,059	3.23%
Sub-total	223,949	205,352	18,597	9.06%	1,403,671	1,359,884	43,787	3.22%
<b>REGIONAL AIRLINES:</b>								
Passengers								
Enplaned	32,223	40,198	(7,975)	-19.84%	295,537	300,527	(4,990)	-1.66%
Deplaned	33,541	40,867	(7,326)	-17.93%	299,166	300,546	(1,380)	-0.46%
Sub-total	65,764	81,065	(15,301)	-18.87%	594,703	601,073	(6,370)	-1.06%
<b>TOTAL PASSENGERS</b>	<b>289,713</b>	<b>286,417</b>	<b>3,296</b>	<b>1.15%</b>	<b>1,998,374</b>	<b>1,960,957</b>	<b>37,417</b>	<b>1.91%</b>
<b>CARGO: Enplaned</b>	<b>2,247.18</b>	<b>2,387.98</b>	<b>(140.80)</b>	<b>-5.90%</b>	<b>17,277.76</b>	<b>17,229.79</b>	<b>47.97</b>	<b>0.28%</b>
<b>  Deplaned</b>	<b>3,234.98</b>	<b>3,258.89</b>	<b>(23.91)</b>	<b>-0.73%</b>	<b>25,275.04</b>	<b>23,445.70</b>	<b>1,829.34</b>	<b>7.80%</b>
<b>CARGO: Felts Field</b>	<b>3.16</b>	<b>4.89</b>	<b>(1.73)</b>	<b>-35.38%</b>	<b>16.90</b>	<b>17.79</b>	<b>(0.89)</b>	<b>-5.00%</b>
<b>TOTAL CARGO (in Tons)</b>	<b>5,485.32</b>	<b>5,651.76</b>	<b>(164.71)</b>	<b>-2.94%</b>	<b>42,569.70</b>	<b>40,693.28</b>	<b>1,877.31</b>	<b>4.61%</b>

Passenger activity reported by individual airlines

### MONTHLY AIRCRAFT ACTIVITY

	August				YEAR TO DATE			
	2014	2013	Increase (Decrease)	Percent Difference	2014	2013	Increase (Decrease)	Percent Difference
Major Airlines	3,125	3,181	(56)	-1.76%	23,539	22,947	592	2.58%
Regional Airlines	625	682	(57)	-8.36%	5,085	5,612	(527)	-9.39%
General Aviation	1,436	1,422	14	0.98%	8,417	8,295	122	1.47%
Military	96	68	28	41.18%	847	775	72	9.29%
<i>Total Itinerant</i>	<i>5,282</i>	<i>5,353</i>	<i>(71)</i>	<i>-1.33%</i>	<i>37,888</i>	<i>37,629</i>	<i>259</i>	<i>0.69%</i>
<i>Total Local</i>	<i>679</i>	<i>1,140</i>	<i>(461)</i>	<i>-40.44%</i>	<i>5,214</i>	<i>5,606</i>	<i>(392)</i>	<i>-6.99%</i>
<b>TOTAL OPERATIONS</b>	<b>5,961</b>	<b>6,493</b>	<b>(532)</b>	<b>-8.19%</b>	<b>43,102</b>	<b>43,235</b>	<b>(133)</b>	<b>-0.31%</b>

Operations activity is reported by the FEDERAL AVIATION ADMINISTRATION

	2014	2013	Increase (Decrease)	Percent Difference	2014	2013	Increase (Decrease)	Percent Difference
Felts Field Operations Total	7,125	6,407	718	11.21%	35,669	38,164	(2,495)	-6.54%

Operations activity is reported by the FEDERAL AVIATION ADMINISTRATION



**SPOKANE INTERNATIONAL AIRPORT  
MONTHLY TRAFFIC REPORT  
AIRLINE PASSENGER STATISTICS  
August 2014**

Airline	AUGUST ENPLANEMENT DATA				AUGUST DEPLANEMENT DATA			
	2014	2013	Diff	% change	2014	2013	Diff	% change
Alaska	21,430	10,408	11,022	105.90%	21,710	11,355	10,355	91.19%
Allegiant	156	423	(267)	100%	156	515	(359)	100.00%
Delta	32,281	33,060	(779)	-2.36%	30,804	32,014	(1,210)	-3.78%
Frontier	6,443	7,139	(696)	-9.75%	6,275	6,847	(572)	-8.35%
Horizon	32,223	40,198	(7,975)	-19.84%	33,541	40,867	(7,326)	-17.93%
Southwest	37,072	37,626	(554)	-1.47%	35,971	36,804	(833)	-2.26%
United Airlines	9,438	7,977	1,461	18.32%	8,849	7,763	1,086	13.99%
U.S. Airways	6,664	6,791	(127)	-1.87%	6,544	6,630	(86)	-1.30%
Charters	78	-	78	0.00%	78	-	78	100.00%
<b>Total Passengers</b>	<b>145,785</b>	<b>143,622</b>	<b>2,163</b>	<b>1.51%</b>	<b>143,928</b>	<b>142,795</b>	<b>1,133</b>	<b>0.79%</b>

Passenger activity reported by individual airlines

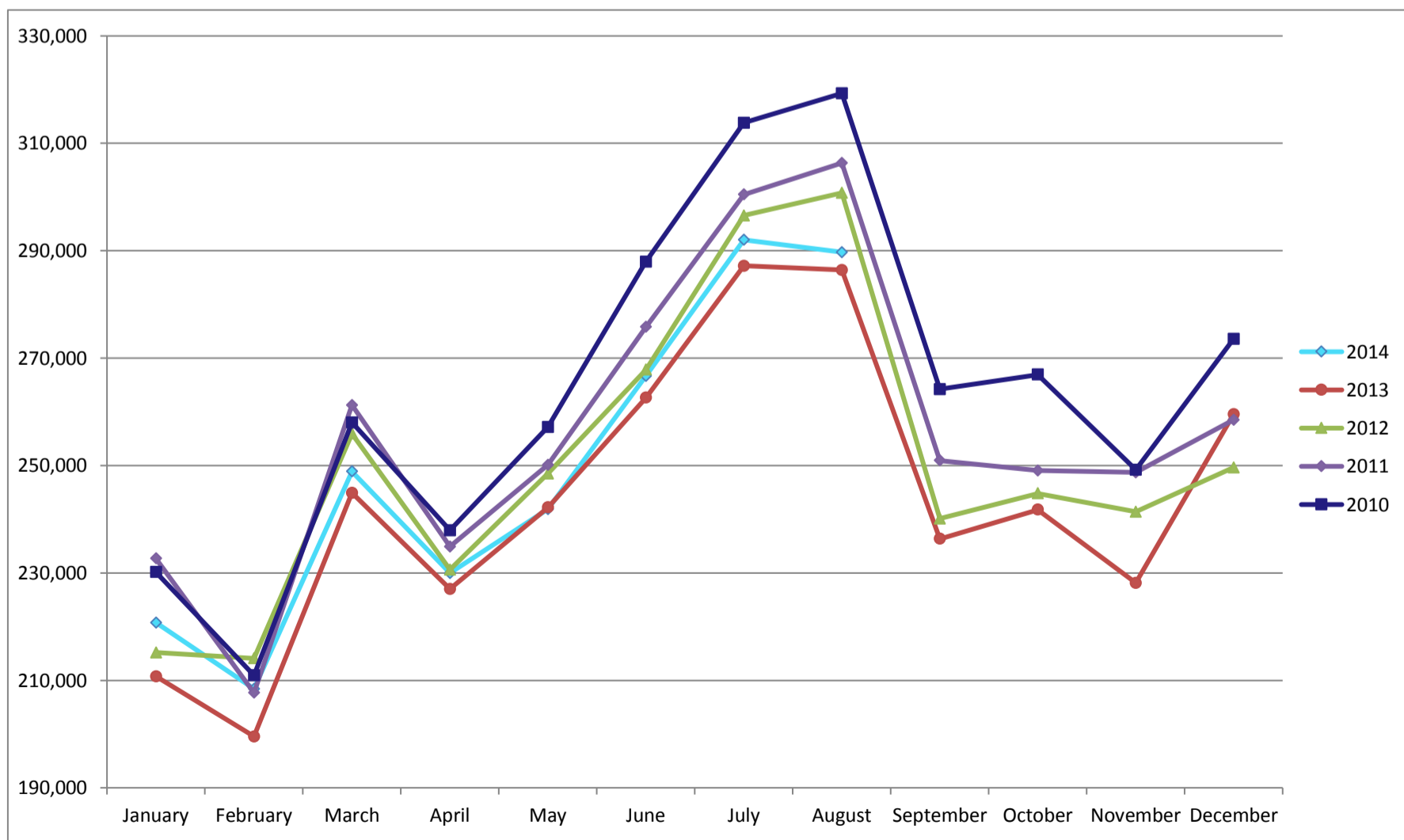
Total Passengers for July 2014	289,713
Total Passengers for July 2013	286,417
% Change Versus July 2013	1.15%



# SPOKANE INTERNATIONAL AIRPORT MONTHLY TRAFFIC REPORT AUGUST 2013 TOTAL PASSENGER TRAFFIC COMPARISON

	2014	Percent difference	2013	2012	2011	2010
January	220,737	4.73%	210,770	215,209	232,696	230,164
February	208,435	4.38%	199,694	214,092	207,689	210,461
March	248,904	1.58%	245,021	255,948	261,285	258,029
April	229,989	1.31%	227,005	230,609	234,919	237,961
May	241,870	-0.14%	242,208	248,503	250,118	257,160
June	266,701	1.55%	262,638	267,849	275,812	291,012
July	292,025	1.68%	287,204	296,393	300,474	318,124
August	289,713	1.15%	286,417	300,775	306,337	319,312
September			240,131	240,131	250,950	264,236
October			241,776	244,804	249,050	266,945
November			228,168	241,381	248,729	249,200
December			259,594	249,621	258,495	273,600
<b>Total Passengers YTD</b>	<b>1,998,374</b>	<b>1.91%</b>	<b>1,960,957</b>	<b>2,029,378</b>	<b>2,069,330</b>	<b>2,122,223</b>

## COMPARISON OF TOTAL PASSENGERS



Passenger activity reported by individual airlines