



## SPOKANE INTERNATIONAL AIRPORT MONTHLY TRAFFIC REPORT July 2014

	July				YEAR TO DATE			
	2014	2013	Increase (Decrease)	Percent Difference	2014	2013	Increase (Decrease)	Percent Difference
<b>MAJOR AIRLINES:</b>								
Passengers								
Enplaned	106,478	101,092	5,386	5.33%	585,488	572,315	13,173	2.30%
Deplaned	108,288	105,148	3,140	2.99%	594,234	578,889	15,345	2.65%
Sub-total	214,766	206,240	8,526	4.13%	1,179,722	1,151,204	28,518	2.48%
<b>REGIONAL AIRLINES:</b>								
Passengers								
Enplaned	37,814	40,188	(2,374)	-5.91%	263,314	261,912	1,402	0.54%
Deplaned	39,445	40,776	(1,331)	-3.26%	265,625	261,424	4,201	1.61%
Sub-total	77,259	80,964	(3,705)	-4.58%	528,939	523,336	5,603	1.07%
<b>TOTAL PASSENGERS</b>	<b>292,025</b>	<b>287,204</b>	<b>4,821</b>	<b>1.68%</b>	<b>1,708,661</b>	<b>1,674,540</b>	<b>34,121</b>	<b>2.04%</b>
<b>CARGO: Enplaned</b>	<b>2,238.0</b>	<b>2,154.7</b>	<b>83</b>	<b>3.87%</b>	<b>15,030.6</b>	<b>14,841.8</b>	<b>189</b>	<b>-1.26%</b>
<b>Deplaned</b>	<b>3,366.3</b>	<b>3,102.5</b>	<b>264</b>	<b>8.50%</b>	<b>22,040.1</b>	<b>20,186.8</b>	<b>1,853</b>	<b>-8.41%</b>
<b>TOTAL CARGO (in Tons)</b>	<b>5,604.3</b>	<b>5,257.2</b>	<b>347</b>	<b>6.60%</b>	<b>37,070.7</b>	<b>35,028.6</b>	<b>2,042</b>	<b>5.83%</b>

Passenger activity reported by individual airlines

### MONTHLY AIRCRAFT ACTIVITY

	July				YEAR TO DATE			
	2014	2013	Increase (Decrease)	Percent Difference	2014	2013	Increase (Decrease)	Percent Difference
Major Airlines	3,228	3,160	68	2.15%	20,414	19,766	648	3.28%
Regional Airlines	709	685	24	3.50%	4,460	4,930	(470)	-9.53%
General Aviation	1,297	1,469	(172)	-11.71%	6,981	6,873	108	1.57%
Military	82	98	(16)	-16.33%	751	707	44	6.22%
<b>Total Itinerant</b>	<b>5,316</b>	<b>5,412</b>	<b>(96)</b>	<b>-1.77%</b>	<b>32,606</b>	<b>32,276</b>	<b>330</b>	<b>1.02%</b>
<b>Total Local</b>	<b>871</b>	<b>1,180</b>	<b>(309)</b>	<b>-26.19%</b>	<b>4,348</b>	<b>4,406</b>	<b>(58)</b>	<b>-1.32%</b>
<b>TOTAL OPERATIONS</b>	<b>6,187</b>	<b>6,592</b>	<b>(405)</b>	<b>-6.14%</b>	<b>36,954</b>	<b>36,682</b>	<b>272</b>	<b>0.74%</b>

Operations activity is reported by the FEDERAL AVIATION ADMINISTRATION

	2014	2013	Increase (Decrease)	Percent Difference	2014	2013	Increase (Decrease)	Percent Difference
Felts Field Operations Total	4,886	4,752	134	2.82%	28,544	31,754	(3,210)	-10.11%

Operations activity is reported by the FEDERAL AVIATION ADMINISTRATION



**SPOKANE INTERNATIONAL AIRPORT  
MONTHLY TRAFFIC REPORT  
AIRLINE PASSENGER STATISTICS  
July 2014**

Airline	JULY ENPLANEMENT DATA				JULY DEPLANEMENT DATA			
	2014	2013	Diff	% change	2014	2013	Diff	% change
Alaska	17,947	10,828	7,119	65.75%	17,147	11,763	5,384	45.77%
Allegiant	-	750	(750)	100%	-	746	(746)	100.00%
Delta	31,621	31,396	225	0.72%	32,561	32,783	(222)	-0.68%
Frontier	5,892	6,611	(719)	-10.88%	6,114	6,678	(564)	-8.45%
Horizon	37,814	39,936	(2,122)	-5.31%	39,445	40,538	(1,093)	-2.70%
Southwest	35,583	36,905	(1,322)	-3.58%	36,571	38,225	(1,654)	-4.33%
United Airlines	9,030	8,494	536	6.31%	8,983	8,447	536	6.35%
U.S. Airways	6,405	6,309	96	1.52%	6,912	6,744	168	2.49%
Charters	-	51	(51)	0.00%	-	-	-	100.00%
<b>Total Passengers</b>	<b>144,292</b>	<b>141,280</b>	<b>3,012</b>	<b>2.13%</b>	<b>147,733</b>	<b>145,924</b>	<b>1,809</b>	<b>1.24%</b>

Passenger activity reported by individual airlines

Total Passengers for July 2014	292,025
Total Passengers for July 2013	287,204
% Change Versus July 2013	1.68%



# SPOKANE INTERNATIONAL AIRPORT MONTHLY TRAFFIC REPORT July 2014

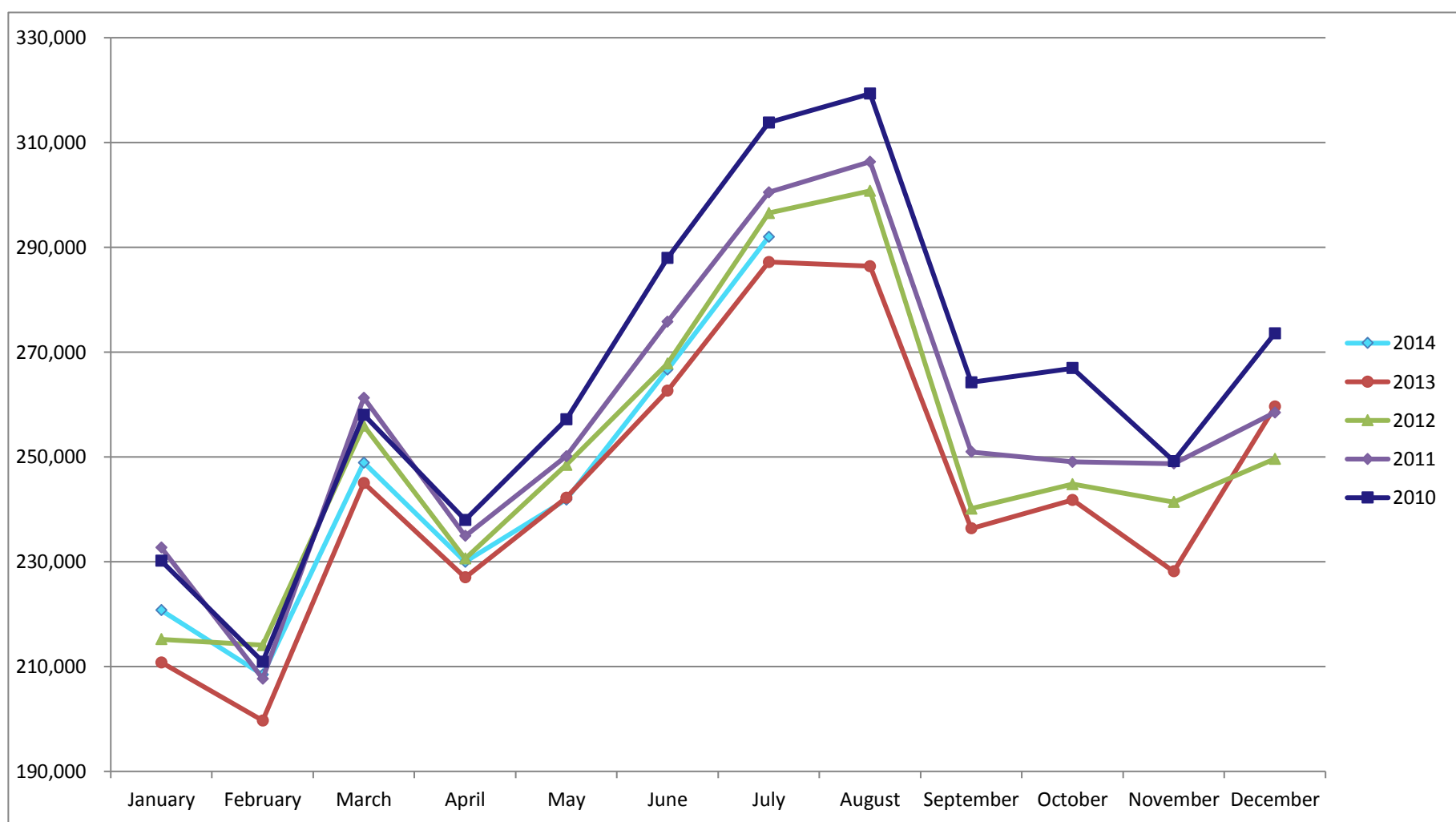
## TOTAL PASSENGER TRAFFIC COMPARISON

	2014	Percent difference	2013	2012	2011	2010
January	220,737	4.73%	210,770	215,209	232,696	230,164
February	208,435	4.38%	199,694	214,092	207,689	210,461
March	248,904	1.58%	245,021	255,948	261,285	258,029
April	229,989	1.31%	227,005	230,609	234,919	237,961
May	241,870	-0.14%	242,208	248,503	250,118	257,160
June	266,701	1.55%	262,638	267,849	275,812	291,012
July	292,025	1.68%	287,204	296,393	300,474	318,124
August			286,417	300,775	3,103	319,312
September			236,363	240,131	250,950	264,236
October			241,776	244,804	249,050	266,945
November			228,168	241,381	248,729	249,200
December			259,594	249,621	258,495	273,600
<b>Total Passengers YTD</b>	<b>1,708,661</b>	<b>2.04%</b>	<b>1,674,540</b>	<b>1,728,603</b>	<b>1,762,993</b>	<b>1,802,911</b>

Revised 1-22-2014

2014      2013

### COMPARISON OF TOTAL PASSENGERS



Passenger activity reported by individual airlines