



SPOKANE INTERNATIONAL AIRPORT MONTHLY TRAFFIC REPORT Jun-14

	June				YEAR TO DATE			
	2014	2013	Increase (Decrease)	Percent Difference	2014	2013	Increase (Decrease)	Percent Difference
MAJOR AIRLINES:								
Passengers								
Enplaned	94,902	91,997	2,905	3.16%	479,010	472,554	6,456	1.37%
Deplaned	96,877	94,347	2,530	2.68%	485,946	475,248	10,698	2.25%
Sub-total	191,779	186,344	5,435	2.92%	964,956	947,802	17,154	1.81%
REGIONAL AIRLINES:								
Passengers								
Enplaned	36,507	37,759	(1,252)	-3.32%	225,500	220,393	5,107	2.32%
Deplaned	38,415	38,535	(120)	-0.31%	226,180	219,141	7,039	3.21%
Sub-total	74,922	76,294	(1,372)	-1.80%	451,680	439,534	12,146	2.76%
TOTAL PASSENGERS	266,701	262,638	4,063	1.55%	1,416,636	1,387,336	29,300	2.11%
CARGO: Enplaned	2,084.13	2,058.73	25	1.23%	12,792.54	12,687.13	105	0.83%
Deplaned	3,047.38	2,871.50	176	6.13%	18,673.77	17,084.27	1,590	9.30%
TOTAL CARGO (in Tons)	5,131.51	4,930.23	201	4.08%	31,466.31	29,771.40	1,695	5.69%

Passenger activity reported by individual airlines

MONTHLY AIRCRAFT ACTIVITY

	June				YEAR TO DATE			
	2014	2013	Increase (Decrease)	Percent Difference	2014	2013	Increase (Decrease)	Percent Difference
Major Airlines	3,023	2,951	72	2.44%	17,186	16,606	580	3.49%
Regional Airlines	606	648	(42)	-6.48%	3,751	4,245	(494)	-11.64%
General Aviation	1,091	1,232	(141)	-11.44%	5,684	5,404	280	5.18%
Military	109	145	(36)	-24.83%	669	609	60	9.85%
Total Itinerant	4,829	4,976	(147)	-2.95%	27,290	26,864	426	1.59%
Total Local	736	967	(231)	-23.89%	3,664	3,226	438	13.58%
TOTAL OPERATIONS	5,565	5,943	(378)	-6.36%	30,954	30,090	864	2.87%

Operations activity is reported by the FEDERAL AVIATION ADMINISTRATION

	2014	2013	Increase (Decrease)	Percent Difference	2014	2013	Increase (Decrease)	Percent Difference
Felts Field Operations Total	6,008	6,328	(320)	-5.06%	23,658	27,002	(3,344)	-12.38%

Operations activity is reported by the FEDERAL AVIATION ADMINISTRATION



SPOKANE INTERNATIONAL AIRPORT MONTHLY TRAFFIC REPORT AIRLINE PASSENGER STATISTICS Jun-14

Airline	June ENPLANEMENT DATA				June DEPLANEMENT DATA			
	2014	2013	Diff	% change	2014	2013	Diff	% change
Alaska	15,448	11,401	4,047	35.50%	14,842	12,083	2,759	22.83%
Allegiant	-	986	(986)	100%	-	747	(747)	100.00%
Delta	28,851	27,982	869	3.11%	29,526	28,613	913	3.19%
Frontier	4,894	3,603	1,291	35.83%	5,171	3,413	1,758	51.51%
Horizon	36,507	37,759	(1,252)	-3.32%	38,415	38,535	(120)	-0.31%
Southwest	31,727	34,568	(2,841)	-8.22%	32,805	36,116	(3,311)	-9.17%
United Airlines	8,352	7,477	875	11.70%	8,043	6,976	1,067	15.30%
U.S. Airways	5,432	5,980	(548)	-9.16%	6,292	6,399	(107)	-1.67%
Charters	198	-	198	0.00%	198	-	198	100.00%
Total Passengers	131,409	129,756	1,653	1.27%	135,292	132,882	2,410	1.81%

Passenger activity reported by individual airlines

Total Passengers for June 2014	266,701
Total Passengers for June 2013	262,638
% Change Versus June 2013	1.55%



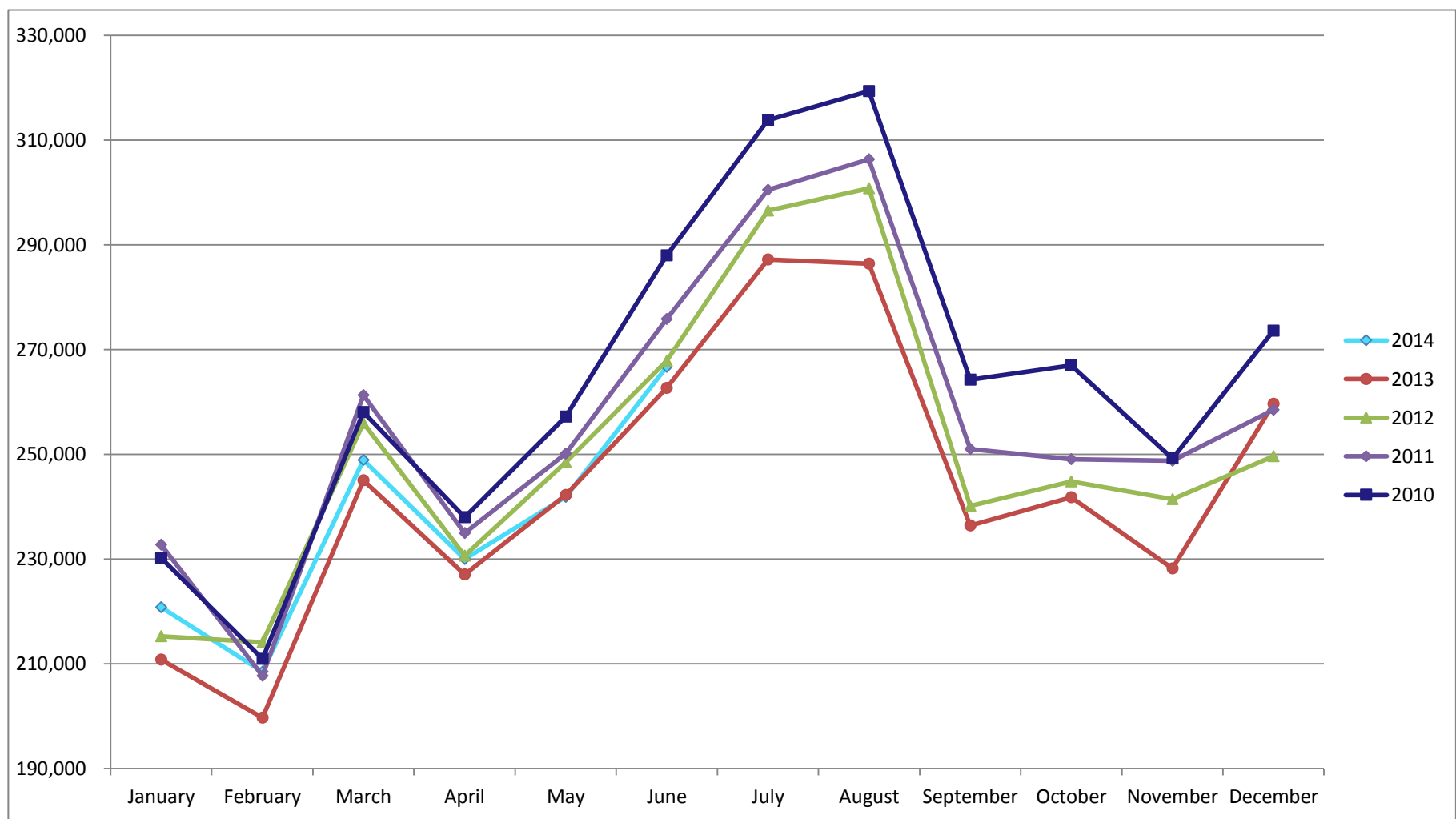
SPOKANE INTERNATIONAL AIRPORT MONTHLY TRAFFIC REPORT

Jun-14

TOTAL PASSENGER TRAFFIC COMPARISON

	2014	Percent difference	2013	2012	2011	2010
<i>January</i>	220,737	4.73%	210,770	215,209	232,696	230,164
<i>February</i>	208,435	4.38%	199,694	214,092	207,689	210,461
<i>March</i>	248,904	1.58%	245,021	255,948	261,285	258,029
<i>April</i>	229,989	1.31%	227,005	230,609	234,919	237,961
<i>May</i>	241,870	-0.14%	242,208	248,503	250,118	257,160
<i>June</i>	266,701	1.55%	262,638	267,849	275,812	291,012
<i>July</i>			287,204	296,393	300,474	318,124
<i>August</i>			286,417	300,775	306,337	319,312
<i>September</i>			236,363	240,131	250,950	264,236
<i>October</i>			241,776	244,804	249,050	266,945
<i>November</i>			228,168	241,381	248,729	249,200
<i>December</i>			259,594	249,621	258,495	273,600
Total Passengers YTD	1,416,636	2.11%	1,387,336	1,432,210	1,462,519	1,484,787

COMPARISON OF TOTAL PASSENGERS



Passenger activity reported by individual airlines