



## SPOKANE INTERNATIONAL AIRPORT MONTHLY TRAFFIC REPORT May-14

	MAY				YEAR TO DATE			
	2014	2013	Increase (Decrease)	Percent Difference	2014	2013	Increase (Decrease)	Percent Difference
<b>MAJOR AIRLINES:</b>								
Passengers								
Enplaned	81,920	81,531	389	0.48%	384,108	379,025	5,083	1.34%
Deplaned	84,669	82,413	2,256	2.74%	389,069	379,156	9,913	2.61%
Sub-total	166,589	163,944	2,645	1.61%	773,177	758,181	14,996	1.98%
<b>REGIONAL AIRLINES:</b>								
Passengers								
Enplaned	37,742	39,296	(1,554)	-3.95%	188,993	184,166	4,827	2.62%
Deplaned	37,539	38,968	(1,429)	-3.67%	187,765	182,351	5,414	2.97%
Sub-total	75,281	78,264	(2,983)	-3.81%	376,758	366,517	10,241	2.79%
<b>TOTAL PASSENGERS</b>	<b>241,870</b>	<b>242,208</b>	<b>(338)</b>	<b>-0.14%</b>	<b>1,149,935</b>	<b>1,124,698</b>	<b>25,237</b>	<b>2.24%</b>
<b>CARGO: Enplaned</b>	<b>2,258.60</b>	<b>2,204.80</b>	<b>54</b>	<b>2.44%</b>	<b>10,708.41</b>	<b>10,628.40</b>	<b>80</b>	<b>0.75%</b>
<b>    Deplaned</b>	<b>3,160.84</b>	<b>2,901.00</b>	<b>260</b>	<b>8.96%</b>	<b>15,626.39</b>	<b>14,212.78</b>	<b>1,414</b>	<b>9.95%</b>
<b>TOTAL CARGO (in Tons)</b>	<b>5,419.44</b>	<b>5,105.80</b>	<b>314</b>	<b>6.14%</b>	<b>26,334.80</b>	<b>24,841.18</b>	<b>1,494</b>	<b>6.01%</b>

Passenger activity reported by individual airlines

### MONTHLY AIRCRAFT ACTIVITY

	MAY				YEAR TO DATE			
	2014	2013	Increase (Decrease)	Percent Difference	2014	2013	Increase (Decrease)	Percent Difference
Major Airlines	2,840	2,860	(20)	-0.70%	14,163	13,655	508	3.72%
Regional Airlines	613	788	(175)	-22.21%	3,145	3,597	(452)	-12.57%
General Aviation	1,180	1,199	(19)	-1.58%	4,593	4,172	421	10.09%
Military	122	101	21	20.79%	560	464	96	20.69%
<i>Total Itinerant</i>	<i>4,755</i>	<i>4,948</i>	<i>(193)</i>	<i>-3.90%</i>	<i>22,461</i>	<i>21,888</i>	<i>573</i>	<i>2.62%</i>
<i>Total Local</i>	<i>768</i>	<i>782</i>	<i>(14)</i>	<i>-1.79%</i>	<i>2,928</i>	<i>2,259</i>	<i>669</i>	<i>29.61%</i>
<b>TOTAL OPERATIONS</b>	<b>5,523</b>	<b>5,730</b>	<b>(207)</b>	<b>-3.61%</b>	<b>25,389</b>	<b>24,147</b>	<b>1,242</b>	<b>5.14%</b>

Operations activity is reported by the FEDERAL AVIATION ADMINISTRATION

	2014	2013	Increase (Decrease)	Percent Difference	2014	2013	Increase (Decrease)	Percent Difference
Felts Field Operations Total	6,099	6,647	(548)	-8.24%	17,650	20,676	(3,026)	-14.64%

Operations activity is reported by the FEDERAL AVIATION ADMINISTRATION



**SPOKANE INTERNATIONAL AIRPORT  
MONTHLY TRAFFIC REPORT  
AIRLINE PASSENGER STATISTICS  
May-14**

Airline	MAY ENPLANEMENT DATA				MAY DEPLANEMENT DATA			
	2014	2013	Diff	% change	2014	2013	Diff	% change
Alaska	12,152	10,288	1,864	18.12%	12,057	10,997	1,060	9.64%
Allegiant	166	766	(600)	100%	166	939	(773)	100.00%
Delta	22,427	22,286	141	0.63%	23,583	21,415	2,168	10.12%
Frontier	4,730	3,791	939	24.77%	4,844	3,657	1,187	32.46%
Horizon	37,742	38,385	(643)	-1.68%	37,539	37,885	(346)	-0.91%
Southwest	28,726	30,474	(1,748)	-5.74%	29,601	30,886	(1,285)	-4.16%
United Airlines	8,105	8,313	(208)	-2.50%	8,134	8,356	(222)	-2.66%
U.S. Airways	5,614	5,613	1	0.02%	6,247	6,163	84	1.36%
Charters	-	911	(911)	0.00%	37	1,083	(1,046)	100.00%
<b>Total Passengers</b>	<b>119,662</b>	<b>120,827</b>	<b>(1,165)</b>	<b>-0.96%</b>	<b>122,208</b>	<b>121,381</b>	<b>827</b>	<b>0.68%</b>

Passenger activity reported by individual airlines

Total Passengers for MAY 2014	241,870
Total Passengers for MAY 2013	242,208
% Change Versus MAY 2013	-0.14%

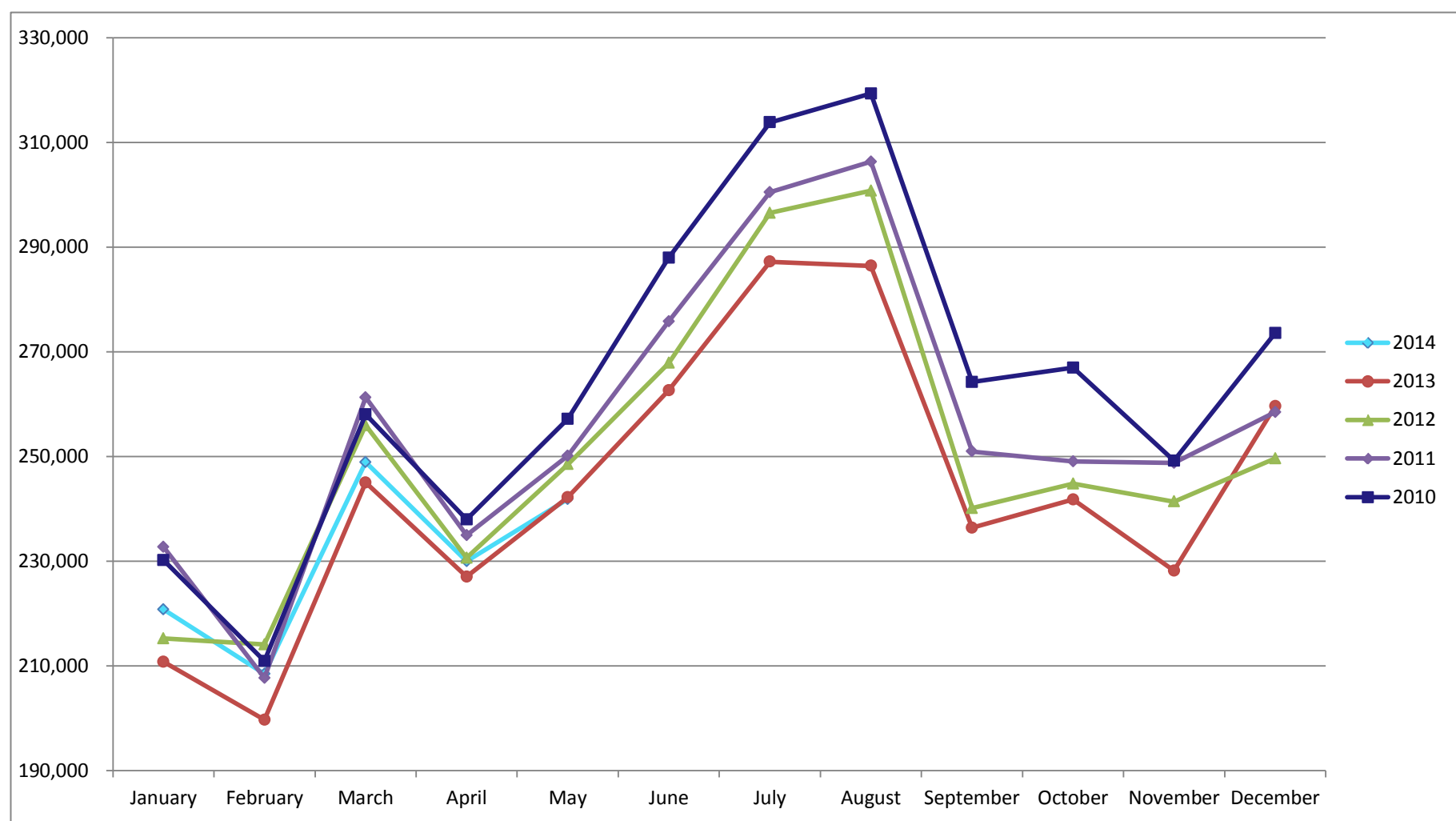


# SPOKANE INTERNATIONAL AIRPORT MONTHLY TRAFFIC REPORT MAY 2014

## TOTAL PASSENGER TRAFFIC COMPARISON

	2014	Percent difference	2013	2012	2011	2010
January	220,737	4.73%	210,770	215,209	232,696	230,164
February	208,435	4.38%	199,694	214,092	207,689	210,461
March	248,904	1.58%	245,021	255,948	261,285	258,029
April	229,989	1.31%	227,005	230,609	234,919	237,961
May	241,870	-0.14%	242,208	248,503	250,118	257,160
June			262,638	267,849	275,812	291,012
July			287,204	296,393	300,474	318,124
August			286,417	300,775	306,337	319,312
September			236,363	240,131	250,950	264,236
October			241,776	244,804	249,050	266,945
November			228,168	241,381	248,729	249,200
December			259,594	249,621	258,495	273,600
<b>Total Passengers YTD</b>	<b>1,149,935</b>	<b>2.24%</b>	<b>1,124,698</b>	<b>1,164,361</b>	<b>1,186,707</b>	<b>1,193,775</b>

### COMPARISON OF TOTAL PASSENGERS



Passenger activity reported by individual airlines