



SPOKANE INTERNATIONAL AIRPORT MONTHLY TRAFFIC REPORT APRIL 2014

	APRIL				YEAR TO DATE			
	2014	2013	Increase (Decrease)	Percent Difference	2014	2013	Increase (Decrease)	Percent Difference
MAJOR AIRLINES:								
Passengers								
Enplaned	77,054	76,382	672	0.88%	302,188	298,115	4,073	1.37%
Deplaned	81,286	78,918	2,368	3.00%	304,400	297,405	6,995	2.35%
Sub-total	158,340	155,300	3,040	1.96%	606,588	595,520	11,068	1.86%
REGIONAL AIRLINES:								
Passengers								
Enplaned	34,678	35,097	(419)	-1.19%	151,251	144,249	7,002	4.85%
Deplaned	36,971	36,608	363	0.99%	150,226	142,721	7,505	5.26%
Sub-total	71,649	71,705	(56)	-0.08%	301,477	286,970	14,507	5.06%
TOTAL PASSENGERS	229,989	227,005	2,984	1.31%	908,065	882,490	25,575	2.90%
CARGO: Enplaned	2,192.98	1,855.10	338	18.21%	8,449.81	8,423.56	26	0.31%
 Deplaned	3,271.29	2,585.40	686	26.53%	12,465.55	11,311.76	1,154	10.20%
TOTAL CARGO (in Tons)	5,464.27	4,440.50	1,024	23.06%	20,915.37	19,735.32	1,180	5.98%

Passenger activity reported by individual airlines

MONTHLY AIRCRAFT ACTIVITY

	APRIL				YEAR TO DATE			
	2014	2013	Increase (Decrease)	Percent Difference	2014	2013	Increase (Decrease)	Percent Difference
Major Airlines	2,757	2,807	(50)	-1.78%	11,323	10,795	528	4.89%
Regional Airlines	650	701	(51)	-7.28%	2,532	2,809	(277)	-9.86%
General Aviation	1,221	943	278	29.48%	3,413	2,973	440	14.80%
Military	98	80	18	22.50%	438	363	75	20.66%
<i>Total Itinerant</i>	<i>4,726</i>	<i>4,531</i>	<i>195</i>	<i>4.30%</i>	<i>17,706</i>	<i>16,940</i>	<i>766</i>	<i>4.52%</i>
<i>Total Local</i>	<i>714</i>	<i>468</i>	<i>246</i>	<i>52.56%</i>	<i>2,160</i>	<i>1,477</i>	<i>683</i>	<i>46.24%</i>
TOTAL OPERATIONS	5,440	4,999	441	8.82%	19,866	18,417	1,449	7.87%

Operations activity is reported by the FEDERAL AVIATION ADMINISTRATION

	2014	2013	Increase (Decrease)	Percent Difference	2014	2013	Increase (Decrease)	Percent Difference
Felts Field Operations Total	4,504	4,232	272	6.43%	11,551	14,029	(2,478)	-17.66%

Operations activity is reported by the FEDERAL AVIATION ADMINISTRATION



**SPOKANE INTERNATIONAL AIRPORT
MONTHLY TRAFFIC REPORT
AIRLINE PASSENGER STATISTICS
APRIL 2014**

Airline	APRIL ENPLANEMENT DATA				APRIL DEPLANEMENT DATA			
	2014	2013	Diff	% change	2014	2013	Diff	% change
Alaska	13,241	8,839	4,402	49.80%	13,289	10,207	3,082	30.19%
Allegiant	281	640	(359)	100%	409	402	7	100.00%
Delta	19,564	21,620	(2,056)	-9.51%	21,455	19,955	1,500	7.52%
Frontier	3,265	3,378	(113)	-3.35%	3,294	3,404	(110)	-3.23%
Horizon	34,678	34,940	(262)	-0.75%	36,971	36,409	562	1.54%
Southwest	27,879	27,668	211	0.76%	29,345	29,766	(421)	-1.41%
United Airlines	7,581	9,372	(1,791)	-19.11%	7,741	9,791	(2,050)	-20.94%
U.S. Airways	5,051	4,865	186	3.82%	5,598	5,393	205	3.80%
Charters	192	157	35	0.00%	155	199	(44)	100.00%
Total Passengers	111,732	111,479	253	0.23%	118,257	115,526	2,731	2.36%

Passenger activity reported by individual airlines

Total Passengers for APRIL 2014	229,989
Total Passengers for APRIL 2013	227,005
% Change Versus APRIL 2013	1.31%

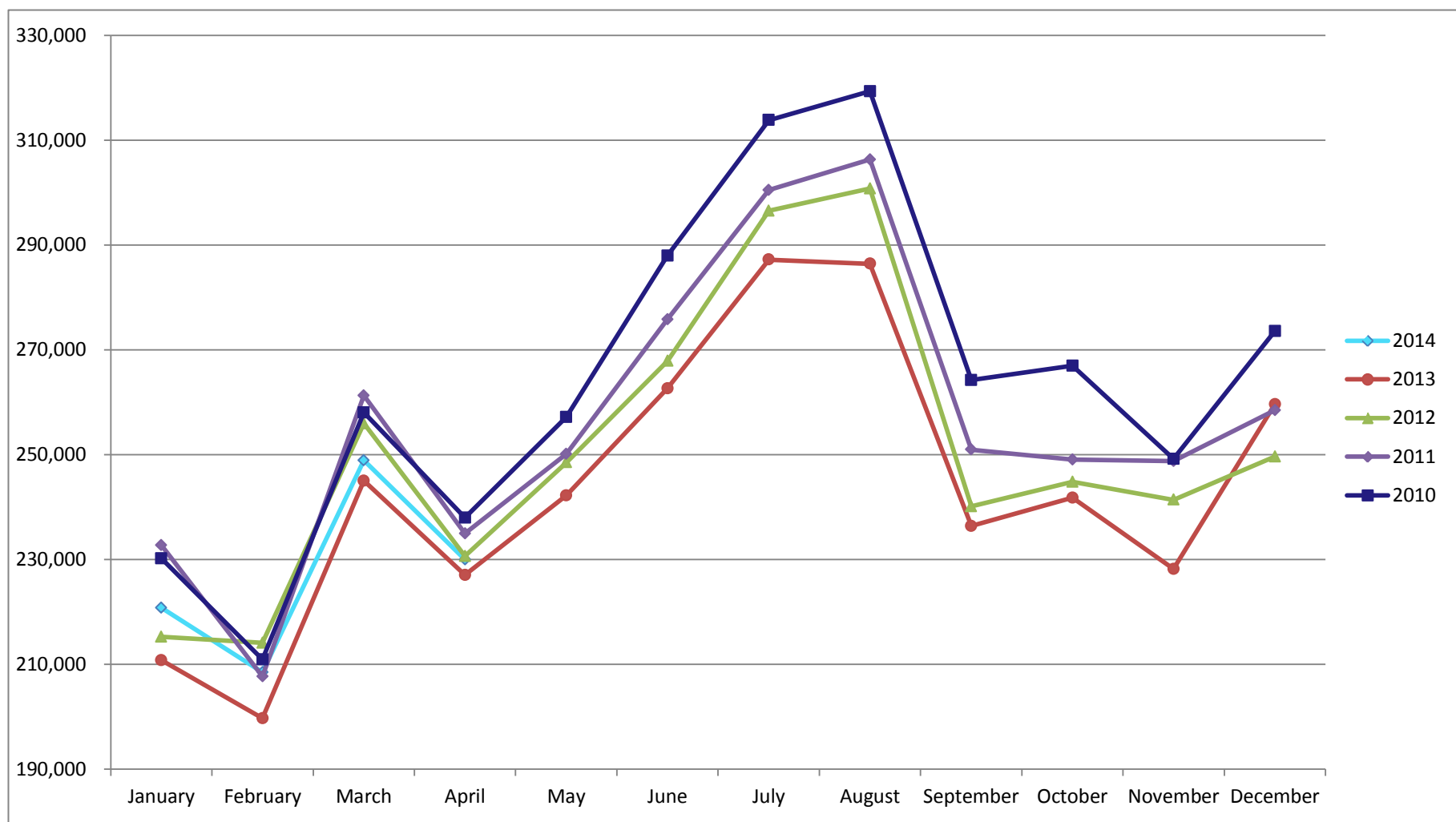


SPOKANE INTERNATIONAL AIRPORT MONTHLY TRAFFIC REPORT APRIL 2014

TOTAL PASSENGER TRAFFIC COMPARISON

	2014	Percent difference	2013	2012	2011	2010
January	220,737	4.73%	210,770	215,209	232,696	230,164
February	208,435	4.38%	199,694	214,092	207,689	210,461
March	248,904	1.58%	245,021	255,948	261,285	258,029
April	229,989	1.31%	227,005	230,609	234,919	237,961
May			242,208	248,503	250,118	257,160
June			262,638	267,849	275,812	291,012
July			287,204	296,393	300,474	318,124
August			286,417	300,775	306,337	319,312
September			236,363	240,131	250,950	264,236
October			241,776	244,804	249,050	266,945
November			228,168	241,381	248,729	249,200
December			259,594	249,621	258,495	273,600
Total Passengers YTD	908,065	2.90%	882,490	915,858	936,589	936,615

COMPARISON OF TOTAL PASSENGERS



Passenger activity reported by individual airlines