



SPOKANE INTERNATIONAL AIRPORT MONTHLY TRAFFIC REPORT MARCH 2014

	MARCH				YEAR TO DATE			
	2014	2013	Increase (Decrease)	Percent Difference	2014	2013	Increase (Decrease)	Percent Difference
MAJOR AIRLINES:								
Passengers								
Enplaned	85,321	84,195	1,126	1.34%	225,134	221,112	4,022	1.82%
Deplaned	82,469	81,977	492	0.60%	223,114	217,825	5,289	2.43%
Sub-total	167,790	166,172	1,618	0.97%	448,248	438,937	9,311	2.12%
REGIONAL AIRLINES:								
Passengers								
Enplaned	40,614	39,916	698	1.75%	116,573	109,773	6,800	6.19%
Deplaned	40,417	38,933	1,484	3.81%	113,255	106,775	6,480	6.07%
Sub-total	81,031	78,849	2,182	2.77%	229,828	216,548	13,280	6.13%
TOTAL PASSENGERS	248,821	245,021	3,800	1.55%	678,076	655,485	22,591	3.45%
CARGO: Enplaned	2,153.7	2,136.4	17	0.81%	6,256.8	6,409.9	(153)	-2.39%
Deplaned	3,135.5	2,879.1	256	8.90%	9,194.3	8,590.4	604	7.03%
TOTAL CARGO (in Tons)	5,289.1	5,015.5	274	5.46%	15,451.1	15,000.3	451	3.01%

Passenger activity reported by individual airlines

Revised 05-14-2014

MONTHLY AIRCRAFT ACTIVITY

	MARCH				YEAR TO DATE			
	2014	2013	Increase (Decrease)	Percent Difference	2014	2013	Increase (Decrease)	Percent Difference
Major Airlines	2,924	2,909	15	0.52%	8,566	7,988	578	7.24%
Regional Airlines	720	697	23	3.30%	1,882	2,108	(226)	-10.72%
General Aviation	1,046	890	156	17.53%	2,192	2,030	162	7.98%
Military	162	81	81	100.00%	340	283	57	20.14%
<i>Total Itinerant</i>	4,852	4,577	275	6.01%	12,980	12,409	571	4.60%
<i>Total Local</i>	721	445	276	62.02%	1,446	1,009	437	43.31%
TOTAL OPERATIONS	5,573	5,022	551	10.97%	14,426	13,418	1,008	7.51%

Operations activity is reported by the FEDERAL AVIATION ADMINISTRATION

	2014	2013	Increase (Decrease)	Percent Difference	2014	2013	Increase (Decrease)	Percent Difference
Felts Field Operations Total	3,511	4,867	(1,356)	-27.86%	7,047	9,796	(2,749)	-28.06%

Operations activity is reported by the FEDERAL AVIATION ADMINISTRATION



**SPOKANE INTERNATIONAL AIRPORT
MONTHLY TRAFFIC REPORT
AIRLINE PASSENGER STATISTICS
MARCH 2014**

Airline	MARCH ENPLANEMENT DATA				MARCH DEPLANEMENT DATA			
	2014	2013	Diff	% change	2014	2013	Diff	% change
Alaska	12,703	11,321	1,382	12.21%	12,101	10,979	1,122	10.22%
Allegiant	826	1,074	(248)	100%	770	1,011	(241)	100.00%
Delta	22,671	22,556	115	0.51%	22,599	22,166	433	1.95%
Frontier	3,013	3,124	(111)	-3.55%	3,140	2,991	149	4.98%
Horizon	40,614	39,551	1,063	2.69%	40,417	38,551	1,866	4.84%
Southwest	31,281	31,027	254	0.82%	29,530	29,501	29	0.10%
United Airlines	8,578	9,422	(844)	-8.96%	8,197	9,570	(1,373)	-14.35%
U.S. Airways	6,249	5,671	578	10.19%	6,132	5,759	373	6.48%
Charters	-	365	(365)	0.00%	83	382	(299)	100.00%
Total Passengers	125,935	124,111	1,824	1.47%	122,969	120,910	2,059	1.70%

Passenger activity reported by individual airlines

Revised 05-14-2014

Total Passengers for MARCH 2014	248,904
Total Passengers for MARCH 2013	245,021
% Change Versus MARCH 2013	1.58%



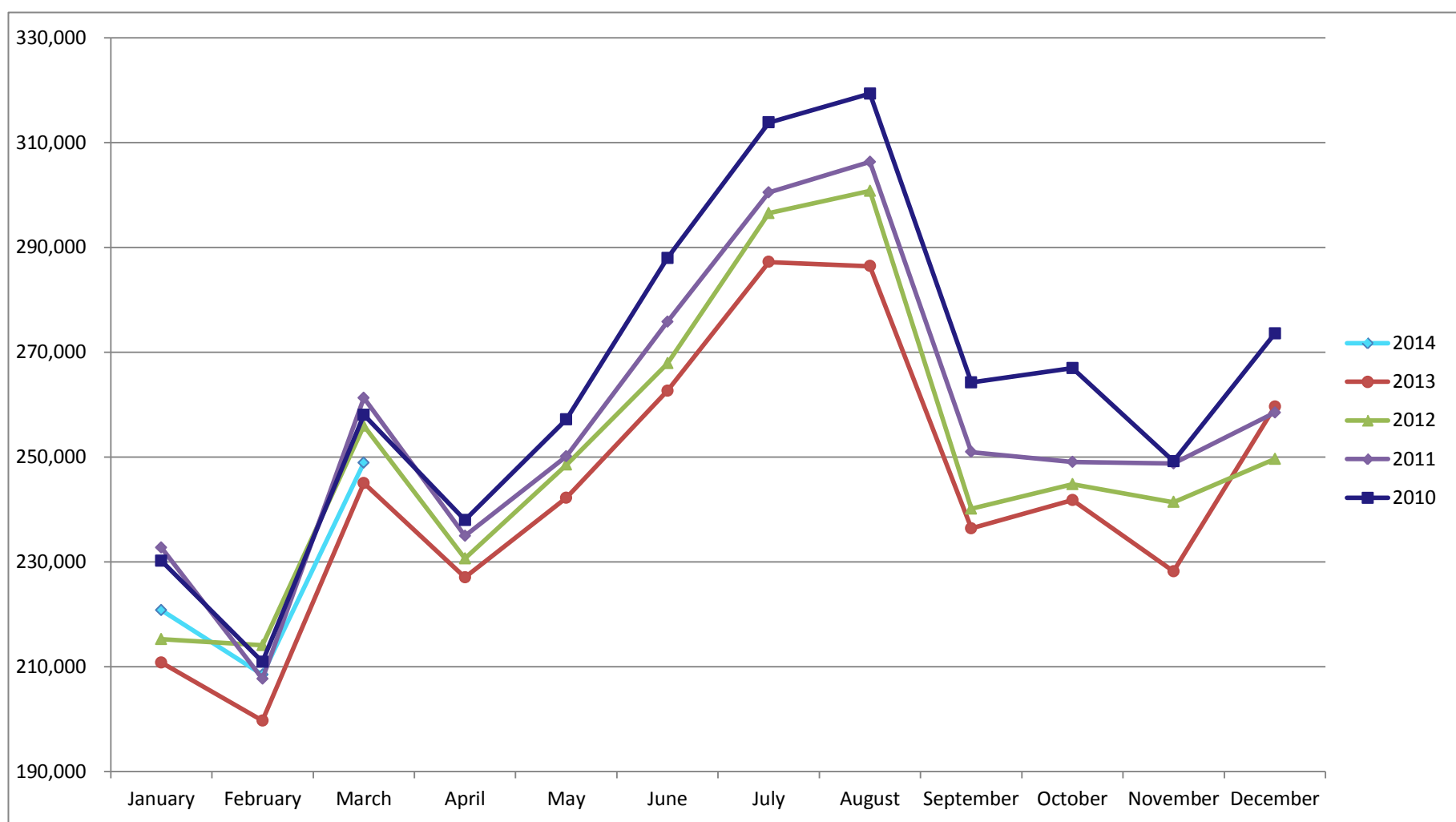
SPOKANE INTERNATIONAL AIRPORT MONTHLY TRAFFIC REPORT MARCH 2014

TOTAL PASSENGER TRAFFIC COMPARISON

	2014	Percent difference	2013	2012	2011	2010
January	220,737	4.73%	210,770	215,209	232,696	230,164
February	208,435	4.38%	199,694	214,092	207,689	210,461
March	248,904	1.58%	245,021	255,948	261,285	258,029
April			227,005	230,609	234,919	237,961
May			242,208	248,503	250,118	257,160
June			262,638	267,849	275,812	291,012
July			287,204	296,393	300,474	318,124
August			286,417	300,775	306,337	319,312
September			236,363	240,131	250,950	264,236
October			241,776	244,804	249,050	266,945
November			228,168	241,381	248,729	249,200
December			259,594	249,621	258,495	273,600
Total Passengers YTD	678,076	3.45%	655,485	685,249	701,670	698,654

Revised 05-14-2014

COMPARISON OF TOTAL PASSENGERS



Passenger activity reported by individual airlines