



## SPOKANE INTERNATIONAL AIRPORT MONTHLY TRAFFIC REPORT FEBRUARY 2014

	February				YEAR TO DATE			
	2014	2013	Increase (Decrease)	Percent Difference	2014	2013	Increase (Decrease)	Percent Difference
<b>MAJOR AIRLINES:</b>								
Passengers								
Enplaned	67,448	66,543	905	1.36%	139,813	136,917	2,896	2.12%
Deplaned	68,340	66,089	2,251	3.41%	140,562	135,848	4,714	3.47%
Sub-total	135,788	132,632	3,156	2.38%	280,375	272,765	7,610	2.79%
<b>REGIONAL AIRLINES:</b>								
Passengers								
Enplaned	36,940	33,961	2,979	8.77%	75,959	69,857	6,102	8.73%
Deplaned	35,707	33,101	2,606	7.87%	72,838	67,842	4,996	7.36%
Sub-total	72,647	67,062	5,585	8.33%	148,797	137,699	11,098	8.06%
<b>TOTAL PASSENGERS</b>	<b>208,435</b>	<b>199,694</b>	<b>8,741</b>	<b>4.38%</b>	<b>429,172</b>	<b>410,464</b>	<b>18,708</b>	<b>4.56%</b>
<b>CARGO: Enplaned</b>	1,991.0	2,060.0	(69)	-3.35%	4,103.2	4,273.5	(170)	-3.99%
<b>Deplaned</b>	2,872.6	2,781.7	91	3.27%	6,058.8	5,711.4	347	6.08%
<b>TOTAL CARGO (in Tons)</b>	<b>4,863.6</b>	<b>4,841.7</b>	<b>22</b>	<b>0.45%</b>	<b>10,162.0</b>	<b>9,984.9</b>	<b>177</b>	<b>1.77%</b>

Passenger activity reported by individual airlines

Revised 05-14-2014

### MONTHLY AIRCRAFT ACTIVITY

	February				YEAR TO DATE			
	2014	2013	Increase (Decrease)	Percent Difference	2014	2013	Increase (Decrease)	Percent Difference
Major Airlines	2,682	2,480	202	8.15%	5,642	5,079	563	11.08%
Regional Airlines	603	681	(78)	-11.45%	1,162	1,411	(249)	-17.65%
General Aviation	579	649	(70)	-10.79%	1,146	1,140	6	0.53%
Military	115	104	11	10.58%	178	202	(24)	-11.88%
<i>Total Itinerant</i>	<i>3,979</i>	<i>3,914</i>	<i>65</i>	<i>1.66%</i>	<i>8,128</i>	<i>7,832</i>	<i>296</i>	<i>3.78%</i>
<i>Total Local</i>	<i>323</i>	<i>312</i>	<i>11</i>	<i>3.53%</i>	<i>725</i>	<i>564</i>	<i>161</i>	<i>28.55%</i>
<b>TOTAL OPERATIONS</b>	<b>4,302</b>	<b>4,226</b>	<b>76</b>	<b>1.80%</b>	<b>8,853</b>	<b>8,396</b>	<b>457</b>	<b>5.44%</b>

Operations activity is reported by the FEDERAL AVIATION ADMINISTRATION

	2014	2013	Increase (Decrease)	Percent Difference	2014	2013	Increase (Decrease)	Percent Difference
Felts Field Operations Total	1,904	1,868	36	1.93%	3,536	4,929	(1,393)	-28.26%

Operations activity is reported by the FEDERAL AVIATION ADMINISTRATION



**SPOKANE INTERNATIONAL AIRPORT  
MONTHLY TRAFFIC REPORT  
AIRLINE PASSENGER STATISTICS  
FEBRUARY 2014**

Airline	FEBRUARY ENPLANEMENT DATA				FEBRUARY DEPLANEMENT DATA			
	2014	2013	Diff	% change	2014	2013	Diff	% change
Alaska	9,798	9,962	(164)	-1.65%	9,510	9,970	(460)	-4.61%
Allegiant	908	640	268	100%	816	402	414	100.00%
Delta	16,609	16,578	31	0.19%	17,229	16,969	260	1.53%
Frontier	2,783	2,541	242	9.52%	2,847	2,547	300	11.78%
Horizon	36,940	33,862	3,078	9.09%	35,707	33,072	2,635	7.97%
Southwest	24,729	24,223	506	2.09%	25,043	23,854	1,189	4.98%
United Airlines	7,088	7,830	(742)	-9.48%	7,304	7,592	(288)	-3.79%
U.S. Airways	5,494	4,769	725	15.20%	5,506	4,755	751	15.79%
Charters	39	99	(60)	0.00%	85	29	56	100.00%
<b>Total Passengers</b>	<b>104,388</b>	<b>100,504</b>	<b>3,884</b>	<b>3.86%</b>	<b>104,047</b>	<b>99,190</b>	<b>4,857</b>	<b>4.90%</b>

Passenger activity reported by individual airlines

Revised 05-14-2014

Total Passengers for FEBRUARY 2014	208,435
Total Passengers for FEBRUARY 2013	199,694
% Change Versus FEBRUARY 2013	4.38%



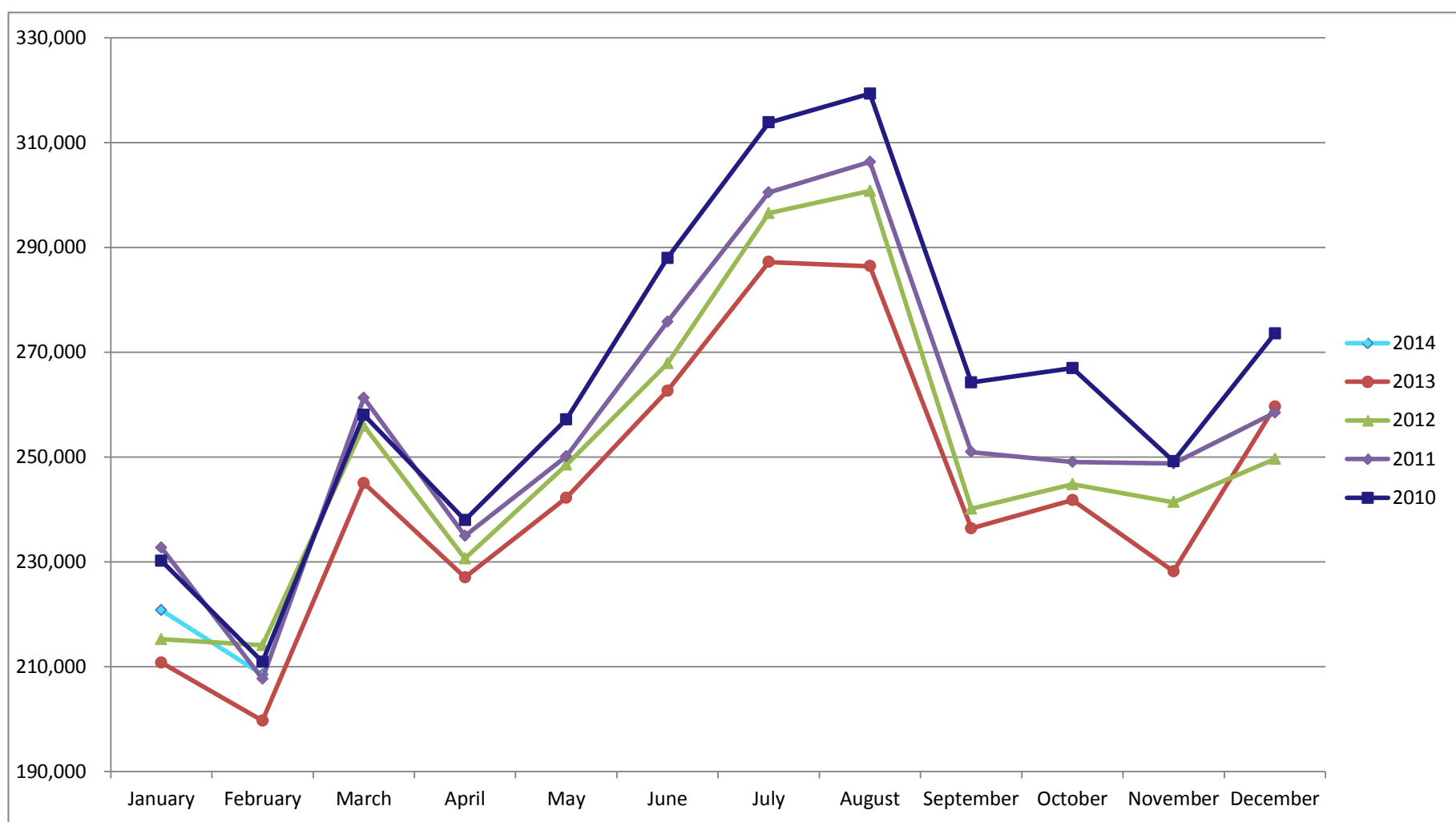
# SPOKANE INTERNATIONAL AIRPORT MONTHLY TRAFFIC REPORT FEBRUARY 2014

## TOTAL PASSENGER TRAFFIC COMPARISON

	2014	Percent difference	2013	2012	2011	2010
January	220,737	4.73%	210,770	215,209	232,696	230,164
February	208,435	4.38%	199,694	214,092	207,689	210,461
March			245,021	255,948	261,285	258,029
April			227,005	230,609	234,919	237,961
May			242,208	248,503	250,118	257,160
June			262,638	267,849	275,812	291,012
July			287,204	296,393	300,474	318,124
August			286,417	300,775	306,337	319,312
September			236,363	240,131	250,950	264,236
October			241,776	244,804	249,050	266,945
November			228,168	241,381	248,729	249,200
December			259,594	249,621	258,495	273,600
<b>Total Passengers YTD</b>	<b>429,172</b>	<b>4.56%</b>	<b>410,464</b>	<b>429,301</b>	<b>440,385</b>	<b>440,625</b>

Revised 05-14-2014

### COMPARISON OF TOTAL PASSENGERS



Passenger activity reported by individual airlines