



SPOKANE INTERNATIONAL AIRPORT MONTHLY TRAFFIC REPORT JANUARY 2014

	January				YEAR TO DATE			
	2014	2013	Increase (Decrease)	Percent Difference	2014	2013	Increase (Decrease)	Percent Difference
MAJOR AIRLINES:								
Passengers								
Enplaned	72,365	70,374	1,991	2.83%	72,365	70,374	1,991	2.83%
Deplaned	72,222	69,759	2,463	3.53%	72,222	69,759	2,463	3.53%
Sub-total	144,587	140,133	4,454	3.18%	144,587	140,133	4,454	3.18%
REGIONAL AIRLINES:								
Passengers								
Enplaned	39,019	35,896	3,123	8.70%	39,019	35,896	3,123	8.70%
Deplaned	37,131	34,741	2,390	6.88%	37,131	34,741	2,390	6.88%
Sub-total	76,150	70,637	5,513	7.80%	76,150	70,637	5,513	7.80%
TOTAL PASSENGERS	220,737	210,770	9,967	4.73%	220,737	210,770	9,967	4.73%
CARGO: Enplaned	2,112.3	2,213.5	(101)	-4.57%	2,107.5	2,213.5	(106)	-4.79%
Deplaned	3,186.2	2,929.7	257	8.76%	3,181.2	2,929.7	252	8.59%
TOTAL CARGO (in Tons)	5,298.5	5,143.2	155	3.02%	5,288.7	5,143.2	146	2.83%

Passenger activity reported by individual airlines

MONTHLY AIRCRAFT ACTIVITY

	January				YEAR TO DATE			
	2014	2013	Increase (Decrease)	Percent Difference	2014	2013	Increase (Decrease)	Percent Difference
Major Airlines	2,960	2,599	361	13.89%	2,960	2,599	361	13.89%
Regional Airlines	559	730	(171)	-23.42%	559	730	(171)	-23.42%
General Aviation	567	491	76	15.48%	567	491	76	15.48%
Military	63	98	(35)	-35.71%	63	98	(35)	-35.71%
<i>Total Itinerant</i>	<i>4,149</i>	<i>3,918</i>	<i>231</i>	<i>5.90%</i>	<i>4,149</i>	<i>3,918</i>	<i>231</i>	<i>5.90%</i>
<i>Total Local</i>	<i>402</i>	<i>252</i>	<i>150</i>	<i>59.52%</i>	<i>402</i>	<i>252</i>	<i>150</i>	<i>59.52%</i>
TOTAL OPERATIONS	4,551	4,170	381	9.14%	4,551	4,170	381	9.14%

Operations activity is reported by the FEDERAL AVIATION ADMINISTRATION

	2014	2013	Increase (Decrease)	Percent Difference	2014	2013	Increase (Decrease)	Percent Difference
Felts Field Operations Total	1,632	1,868	(236)	-12.63%	1,632	1,868	(236)	-12.63%

Operations activity is reported by the FEDERAL AVIATION ADMINISTRATION

REVISED 2-22-2014



**SPOKANE INTERNATIONAL AIRPORT
MONTHLY TRAFFIC REPORT
AIRLINE PASSENGER STATISTICS
JANUARY 2014**

Airline	JANUARY ENPLANEMENT DATA				JANUARY DEPLANEMENT DATA			
	2014	2013	Diff	% change	2014	2013	Diff	% change
Alaska	10,663	11,047	(384)	-3.48%	9,551	10,163	(612)	-6.02%
Allegiant	716	-	716	100%	553	52	501	100.00%
Delta	17,650	16,201	1,449	8.94%	19,214	16,775	2,439	14.54%
Frontier	3,555	2,834	721	25.44%	3,636	2,865	771	26.91%
Horizon	39,019	35,896	3,123	8.70%	37,131	34,689	2,442	7.04%
Southwest	25,929	25,388	541	2.13%	25,389	25,207	182	0.72%
United Airlines	7,829	9,514	(1,685)	-17.71%	8,293	9,420	(1,127)	-11.96%
U.S. Airways	5,930	5,390	540	10.02%	5,495	5,329	166	3.12%
Charters	93	-	93	0.00%	91	-	91	100.00%
Total Passengers	111,384	106,270	5,114	4.81%	109,353	104,500	4,853	4.64%

Passenger activity reported by individual airlines

Revised 02-22-2014

Total Passengers for January 2014	220,737
Total Passengers for January 2013	210,770
% Change Versus January 2013	4.73%



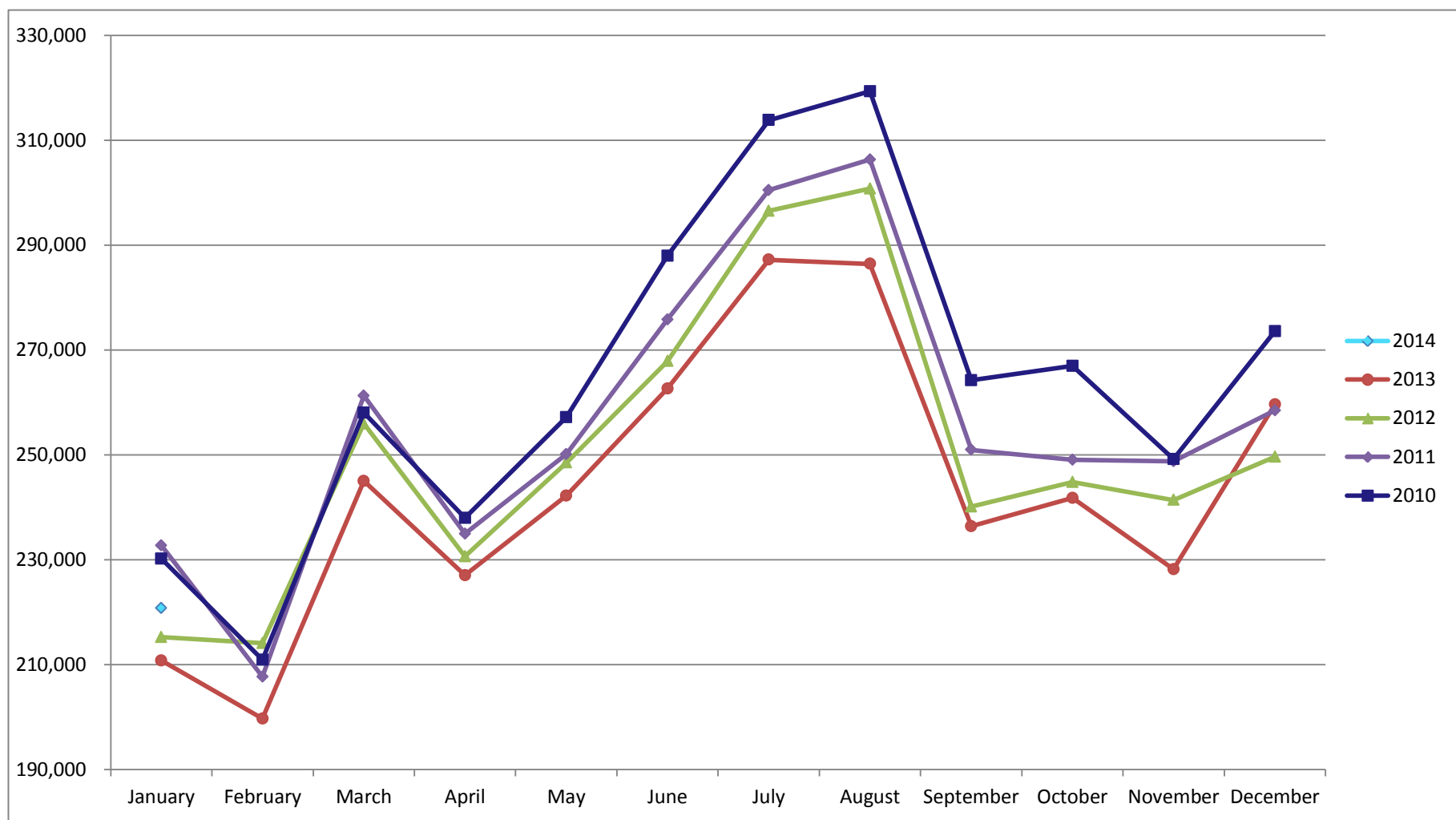
SPOKANE INTERNATIONAL AIRPORT MONTHLY TRAFFIC REPORT JANUARY 2014

TOTAL PASSENGER TRAFFIC COMPARISON

	2014	Percent difference	2013	2012	2011	2010
January	220,737	4.73%	210,770	215,209	232,696	230,164
February			199,694	214,092	207,689	210,461
March			245,021	255,948	261,285	258,029
April			227,005	230,609	234,919	237,961
May			242,208	248,503	250,118	257,160
June			262,638	267,849	275,812	291,012
July			287,204	296,393	300,474	318,124
August			286,417	300,775	306,337	319,312
September			236,363	240,131	250,950	264,236
October			241,776	244,804	249,050	266,945
November			228,168	241,381	248,729	249,200
December			259,594	249,621	258,495	273,600
Total Passengers YTD	220,737	4.73%	210,770	215,209	232,696	230,164

Revised 02-22-2014

COMPARISON OF TOTAL PASSENGERS



Passenger activity reported by individual airlines